

PRICING: _____ UNIT / FLOOR: _____

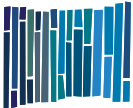
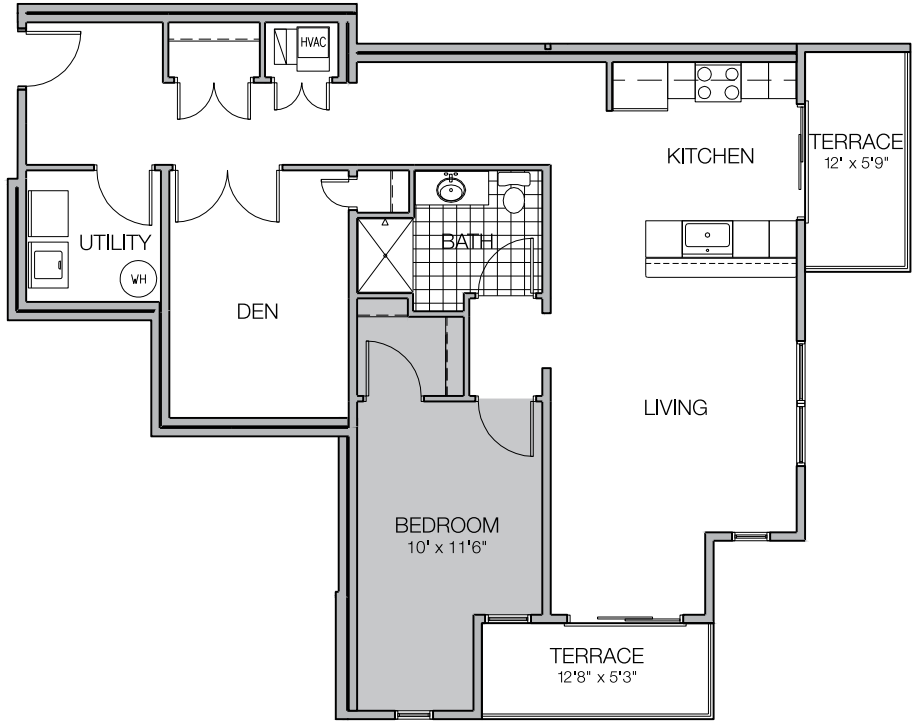
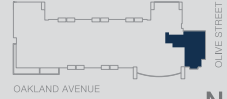
FLOOR PLAN

D

1,285 SQ FT

1 bedroom
1 bath
1 den
2 terraces

FLOORS
2 THRU 4



MOSAIC
PREMIER RESIDENCES BY JOSEPH

4175 North Oakland Ave., Shorewood, WI 53211
414-988-7368 phone | MosaicOnOakland.com

Specifications, equipment, dimensions and prices are subject to change without notice. Dimensions and square footages shown are approximate and include terraces.