

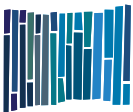
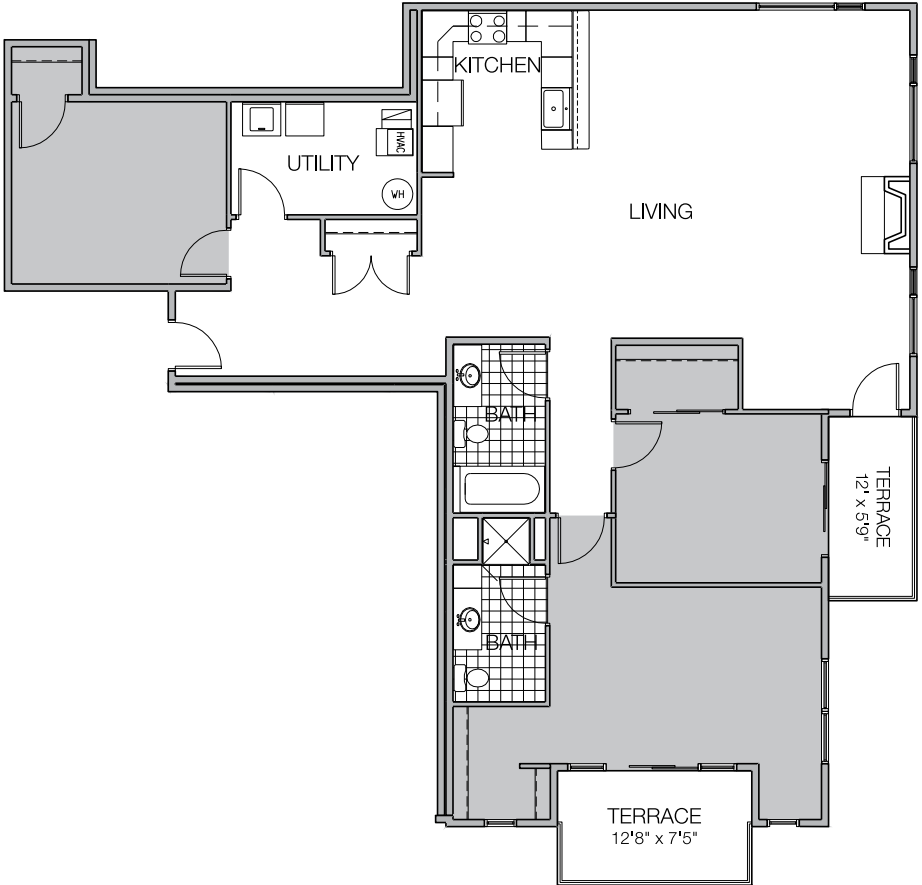
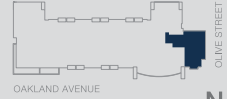
PRICING: \_\_\_\_\_ UNIT / FLOOR: \_\_\_\_\_

FLOOR PLAN

U

**2,170 SQ FT**  
3 bedroom  
2 bath  
2 terraces

FLOOR 5



**MOSAIC**  
PREMIER RESIDENCES BY JOSEPH

4175 North Oakland Ave., Shorewood, WI 53211  
414-988-7368 phone | [MosaicOnOakland.com](http://MosaicOnOakland.com)

Specifications, equipment, dimensions and prices are subject to change without notice. Dimensions and square footages shown are approximate and include terraces.