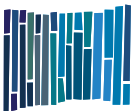
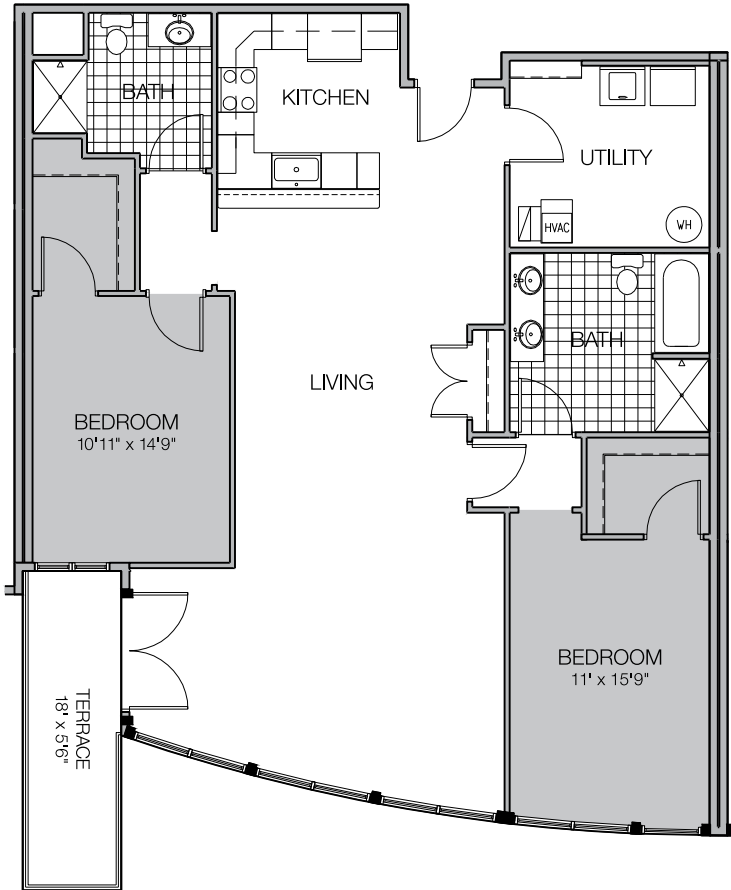


PRICING: _____ UNIT / FLOOR: _____

<p>FLOOR PLAN W1</p>	<p>1,640 SQ FT 2 bedroom 2 bath 1 terrace</p>	<p>FLOOR 6</p>	 <p>OAKLAND AVENUE OLIVE STREET</p> <p>▶</p>
---------------------------------	--	----------------	---



MOSAIC
PREMIER RESIDENCES BY JOSEPH

4175 North Oakland Ave., Shorewood, WI 53211
414-988-7368 phone | MosaicOnOakland.com 

Specifications, equipment, dimensions and prices are subject to change without notice. Dimensions and square footages shown are approximate and include terraces.