

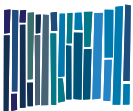
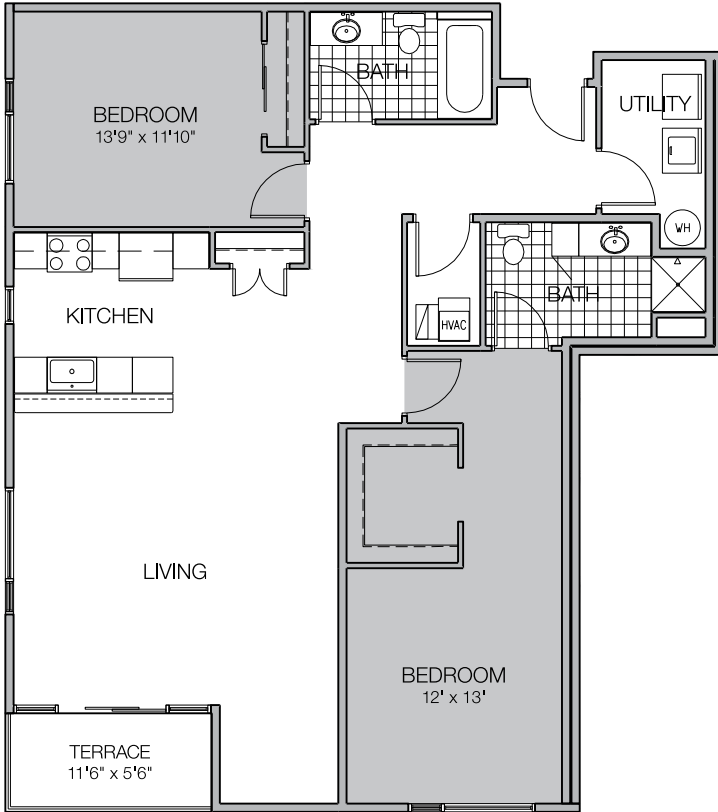
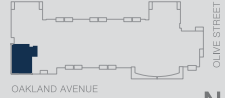
PRICING: _____ UNIT / FLOOR: _____

FLOOR PLAN

Z

1,540 SQ FT
2 bedroom
2 bath
1 terrace

FLOOR 5



MOSAIC
PREMIER RESIDENCES BY JOSEPH

4175 North Oakland Ave., Shorewood, WI 53211
414-988-7368 phone | MosaicOnOakland.com 

Specifications, equipment, dimensions and prices are subject to change without notice. Dimensions and square footages shown are approximate and include terraces.